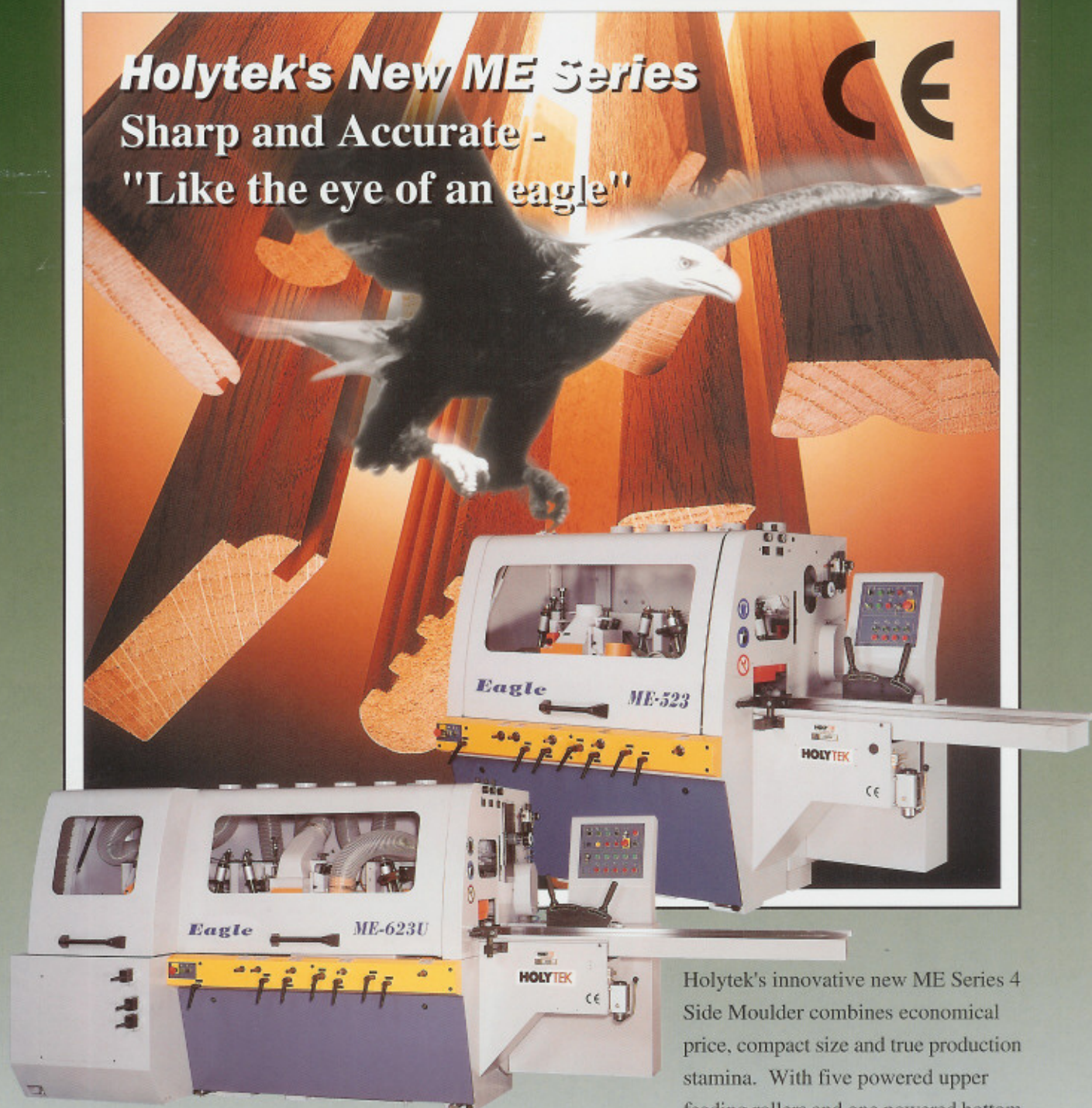


Eagle ME series

Holytek's New ME Series
Sharp and Accurate -
"Like the eye of an eagle"



feeding roller, plus increased motion control, moulding jobs can be handled with greater efficiency and safety.

HOLYTEK

HOLYTEK



CONVENIENT
All machine
convenient
control
ease.
by its

ME-523

This compact 5-spindle moulder is very suitable for cabinet makers and timber joiners in fine woodworking moulding. It comes with 5 powered pneumatic upper pressure rollers and one powered bottom roller to ensure smooth feeding.

INFEED TABLE AND FENCE ADJUSTMENT

The infeed table and infeed fence are conveniently adjusted by two separate levers located at the infeed end of the machine. Hard-chrome table standard.

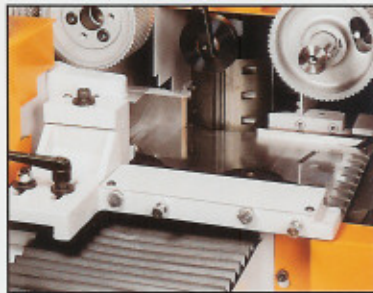
OVER-HEIGHT PROTECTION DEVICE

An over-height protection device is provided at the infeed end of the machine. This device restricts workpieces that are over the allowable maximum height.



CONVENIENT, ACCURATE SPINDLE ADJUSTMENT

All spindle adjustment levers are located at the front of the machine allowing for convenient use. Mechanical digital readout on each spindle assures accurate reading for any spindle adjustment.



SIDE FRONT PRESSURE UNIT

Additional side pressure unit for left vertical spindle provides smooth feeding for short and narrow workpieces. The entire pressure unit, with roller and spring, is easy to adjust.

New **Eagle** ME-series



CONVENIENT, CENTRALIZED CONTROL PANEL

Operation controls of the machine are conveniently grouped in one master control panel for maximum operational efficiency. Each switch is clearly identified with a function symbol.



FEED MAGAZINE (Optional)

Designed for continuously automatic stock infeed, this feed magazine upgrades working efficiency greatly. It is especially ideal for machining on short stocks.



SHORT STOCK PRESSURE ROLLER (Optional)

The additional pressure roller, especially ideal for short stock, can be lifted conveniently. It provides convenient cutter changing or setup.



FRONT AND REAR PRESSURE PLATE

The front pressure plate features 'draw-back' performance, which fully prevents damage to the cutters caused by workpieces that are too high. The rear pressure plate provides extremely uniform holding pressure for outstanding parallel accuracy of machining. At the end, there is a powered bottom feed roller ensuring smooth feeding.



*The best quality 4-spindle
planer with moulder makes
work easy!*

ME-423



Holytek's 'New Generation' 4 Side Planer/Moulder

ME-423

SPECIFICATIONS

MODEL		ME-423	ME-523
Working width		10 - 230 mm	
Working thickness		7 - 125 mm	
Minimum working length		230 mm	
Spindle speed		6000 R.P.M.	
Feed speed		6 - 25 m/min	
Spindle diameter		Ø 40 mm	
Cutter diameter	Front bottom horizontal spindle	Ø 100-150 mm	
	Right/left vertical spindle	Ø 100-180 mm	
	Top horizontal spindle	Ø 100-180 mm	
	Bottom horizontal spindle	Ø 100-180 mm	
Motor horsepower	Bottom horizontal spindle	7.5 HP	
	Right vertical spindle	10 HP	
	Left vertical spindle		
	Top horizontal spindle	7.5 HP	
	Bottom horizontal spindle	—	7.5 HP
	Feed drive	3 HP	
	Feed elevation	1/2 HP	
Vertical spindle adjustment (axial)		30 mm	
Horizontal spindle adjustment (axial)		40 mm	
Table adjustment		12 mm	
Machine dimensions (LxWxH) mm.		3280x1280x1720 mm	3380x1280x1720 mm
Packing dimensions (LxWxH) mm.		2220x1400x1960 mm	2320x1400x1960 mm
Net weight		2500 kgs	2800 kgs
Gross weight		2800 kgs	3100 kgs

* Specifications and design characteristics are subject to change without prior notice.

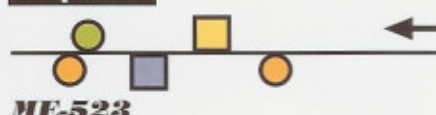
SPINDLE ARRANGEMENT

4 Spindle



ME-423

5 Spindle



ME-523

OPTIONAL EQUIPMENT:

- Automatic hopper feed magazine.
- Programmable spindle controller.
- High-speed spindle: 8000 rpm.
- Short stock auxiliary roller.
- Increase motor power.

New **Eagle** ME-series *with Universal Spindle*

All Series with 2M Long Infeed Table!



ME-623U

Six spindle Planer/Moulder with Universal spindle means one additional spindle on each side!

You can use it as a top or bottom, or left or right side and set it at any angle. This all-round spindle greatly increases the function of the machine. The spindle can be completely adjusted from the front and lock in position.



Universal spindle at the rear of the machine.
Easy to adjust!
More flexible!

The most economical 4-side Planer/Moulder. with Universal Spindle



SPECIFICATIONS

MODEL		ME-523U	ME-623U
Working width		10 - 230 mm	
Working thickness		7 - 125 mm	
Minimum working length		230 mm	
Spindle speed		6000 R.P.M.	
Feed speed		6 - 25 m/min	
Spindle diameter		Ø 40 mm	
Cutter diameter	Front bottom horizontal spindle	Ø 100-150 mm	
	Right/left vertical spindle	Ø 100-180 mm	
	Top horizontal spindle	Ø 100-180 mm	
	Bottom horizontal spindle	Ø 100-180 mm	
	Universal spindle	Ø 100-180 mm	
Motor horsepower	Bottom horizontal spindle	7.5 HP	
	Right vertical spindle	10 HP	
	Left vertical spindle		
	Top horizontal spindle	7.5 HP	
	Bottom horizontal spindle	—	7.5 HP
	Feed drive	3 HP	
	Feed elevation	1/2 HP	
	Universal spindle	7.5 HP	
Vertical spindle adjustment (axial)		30 mm	
Horizontal spindle adjustment (axial)		40 mm	
Table adjustment		12 mm	
Machine dimensions (LxWxH) mm.		4150x1700x1760 mm	4250x1700x1760 mm
Packing dimensions (LxWxH) mm.		4300x1820x2000 mm	4400x1820x2000 mm
Net weight		2900 kgs	3200 kgs
Gross weight		3200 kgs	3600 kgs

* Specifications and design characteristics are subject to change without prior notice.

SPINDLE ARRANGEMENT

ME-523U



ME-623U



OPTIONAL EQUIPMENT:

- Automatic hopper feed magazine.
- Programmable spindle controller.
- High-speed spindle: 8000 rpm.
- Short stock auxiliary roller.
- Increase motor power.

HOLYTEK
I SVERIGE AB
SE-512 91 Sexdrega
Tel +46 325 625547